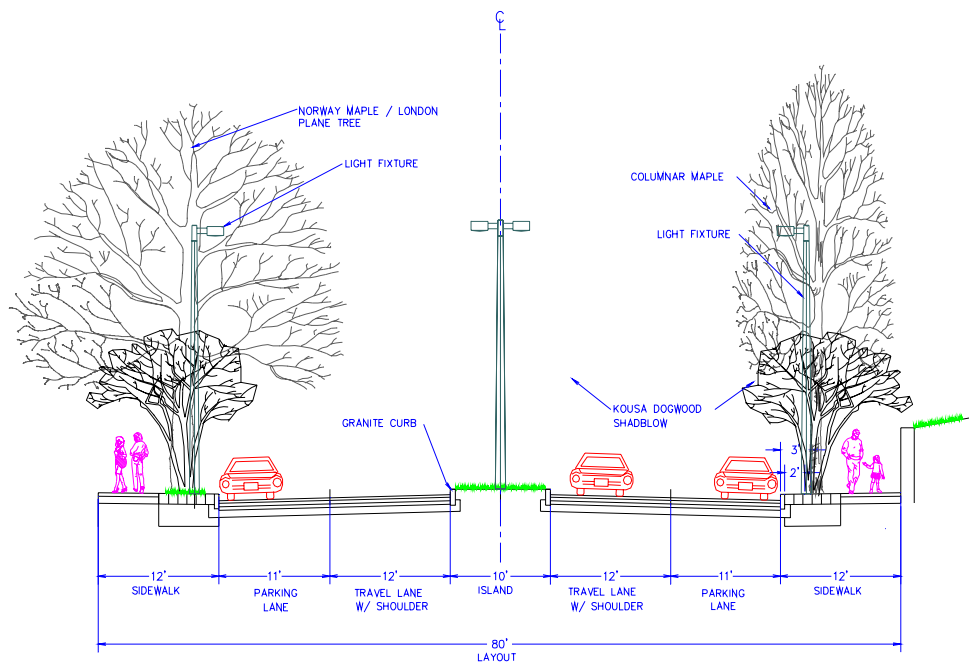


# NATIVE LANDSCAPES

## LANDSCAPE ARCHITECTURE & ENVIRONMENTAL PLANNING



CAMBRIDGE STREET  
FROM WASHINGTON STREET TO BARROWS STREET

300 Summer Street  
Phone-(617) 437-6461

Boston, MA 02210  
Fax-(617) 269-4221

NativeLandscapes@aol.com  
<http://www.nativelandscapes.com>

# INTRODUCTION:

**Native Landscapes** was formed by Robert E. Marini, Landscape Architect, with the intention of providing comprehensive *Environmental Planning* and *Landscape Architectural* services necessary for the issuance of local approvals and the documentation of the construction process.



Based in Boston, with an office in Ft. Myers, Florida, Native Landscapes pursues the role of a design and environmental planning contributor nationwide. We coordinate those disciplines relevant to providing our clients with their desired results.

Being Adaptable to all geographic regions, we shall engage both public and private concerns. Always committed to the public's health, safety and welfare, we accentuate the aesthetic values of the design with the environment and history of the place to ensure that your project will endure the social and physical impacts of time.

## PROJECT APPROACH:

### Cluster Residential Planning:

Planning housing requires providing a sense of continuity for the whole development, while still allowing individuality for each residence. This is accomplished by incorporating open space where buffers are needed.

### Park Design:

Providing open space for people to use and enjoy is important for any area. Using spatial design criteria and knowledge of, material, we create parks that will be enjoyed by all age groups,

### Streetscape Design:

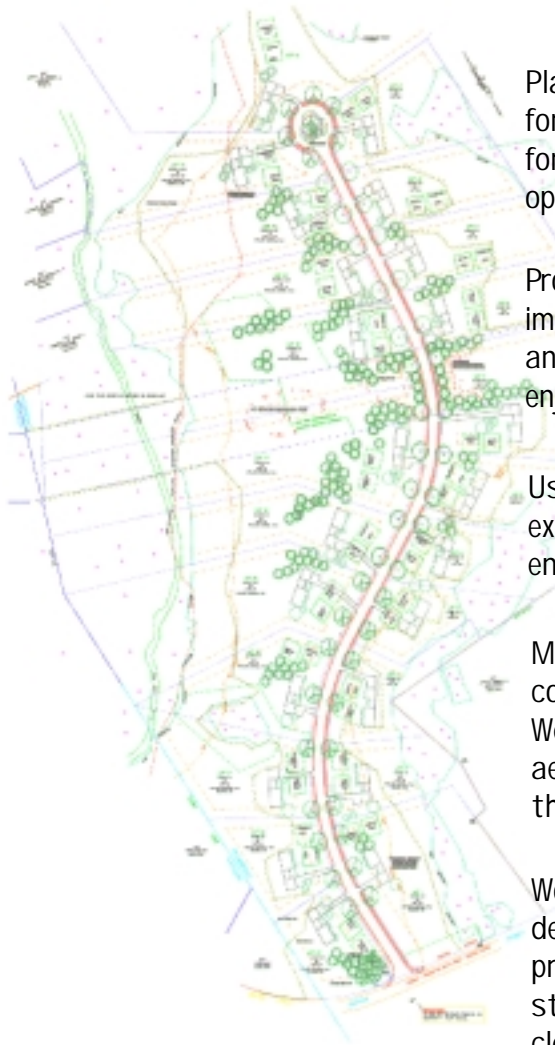
Using our knowledge and experience, we work with the existing city structure to improve circulation and enhance overall pedestrian and vehicular experience.

### Landscape Codes:

Most new development must comply with landscape codes set by counties and other levels of government. We are well versed in addressing codes and we design aesthetically appealing landscapes that comply with the code.

### Historic Restoration:

Working with local and state Historical Societies we devise plans for restoring historic structures, and provide landscapes around them that accentuate the structures. This is a site-specific process that involves cleaning materials, careful disassembly and rebuilding.



## A photograph of a pond surrounded by dense trees and vegetation. The water is calm, reflecting the surrounding greenery. A fallen log is visible in the middle of the pond.

Whether working on a new house or improving an existing residence, we work with the existing conditions to design a residential landscape that is not only aesthetically appealing, but everyday functional.

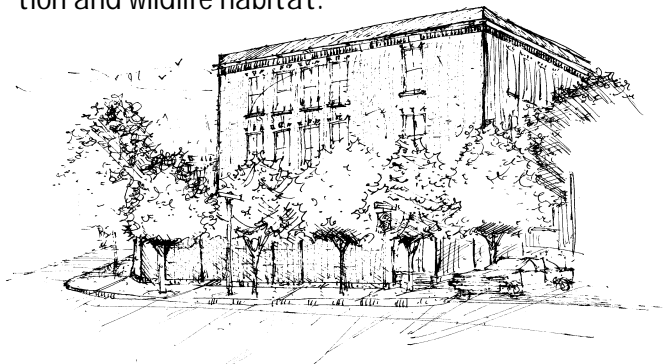
We collaborate with other design disciplines in detailing grading and landscape plans that incorporate signage, lighting, planting etc. up to the level of bid procurement.

Using our knowledge of plant material, soils and other wetland indicators, we delineate wetlands for proposed development following the guidelines set by the DEP. This involves filling out reports including (but not limited to) Bordering Vegetated Wetlands.

We first determine the area of affected wetlands, then impose the appropriate course of action. This generally involves a buffer between the wetlands and any adjacent hazard, removing invasive species and replacing them with native wetland plants thereby restoring the wetlands to a point where it can be enjoyed by both people and wildlife.

When permission is granted by the DEP for new development to encroach on an existing wetlands, replicated wetlands of at least the amount of area impacted must be provided. Using our knowledge and experience, we design new wetlands that perform the task of the existing wetland that was impacted, including flood water retention and wildlife habitat.

This involves first determining the existing types and quantities of wildlife present and calculating the amount of habitat needed. Then that habitat is evaluated using the plant material, wetlands (where existing) and general condition of the site.



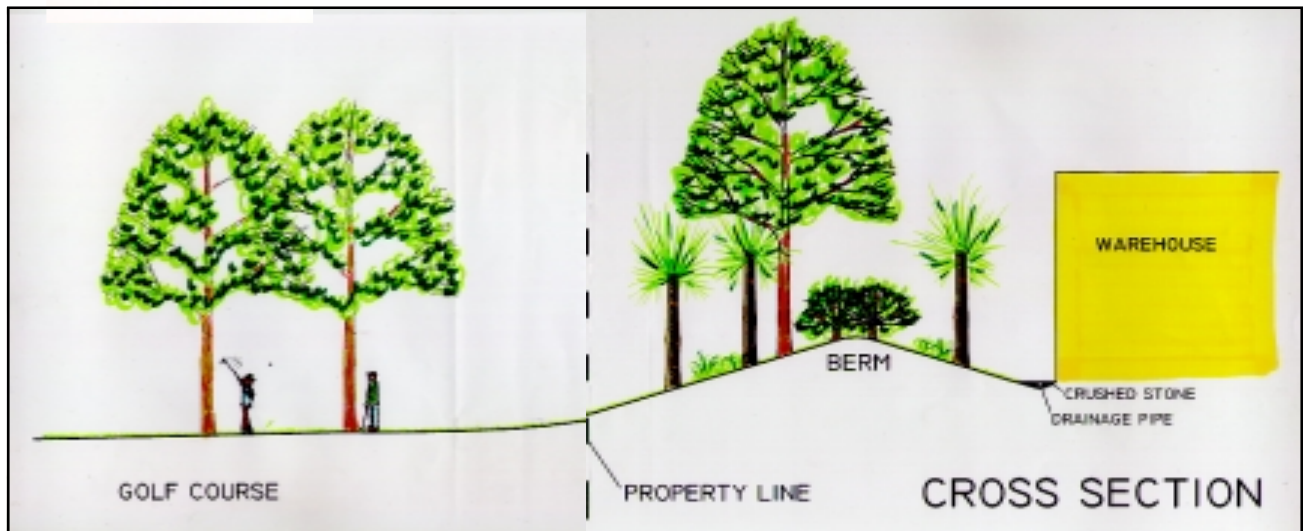




**PROJECT**



**SAMPLES**

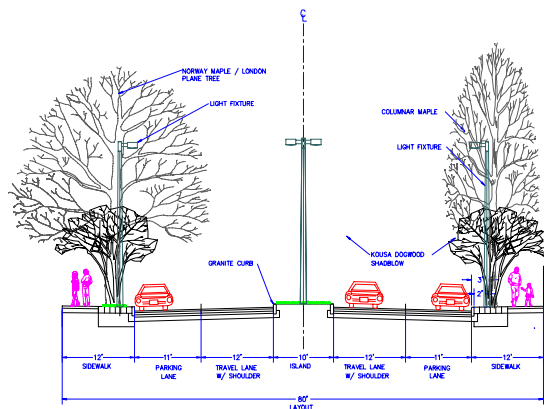


# STREETSCAPE DESIGN

## Brighton Streetscape



Street trees and landscaped island on Cambridge St. in Brighton.



CAMBRIDGE STREET  
FROM WASHINGTON STREET TO BARROWS STREET

Cambridge Street, Tremont Street, and Washington Street. This project involved locating street trees, designing landscaped islands, new sidewalks, special paving crosswalks, small sitting parks and lighting.



## Brighton Streetscape (Continued)



Cambridge Street street trees and tree grate.



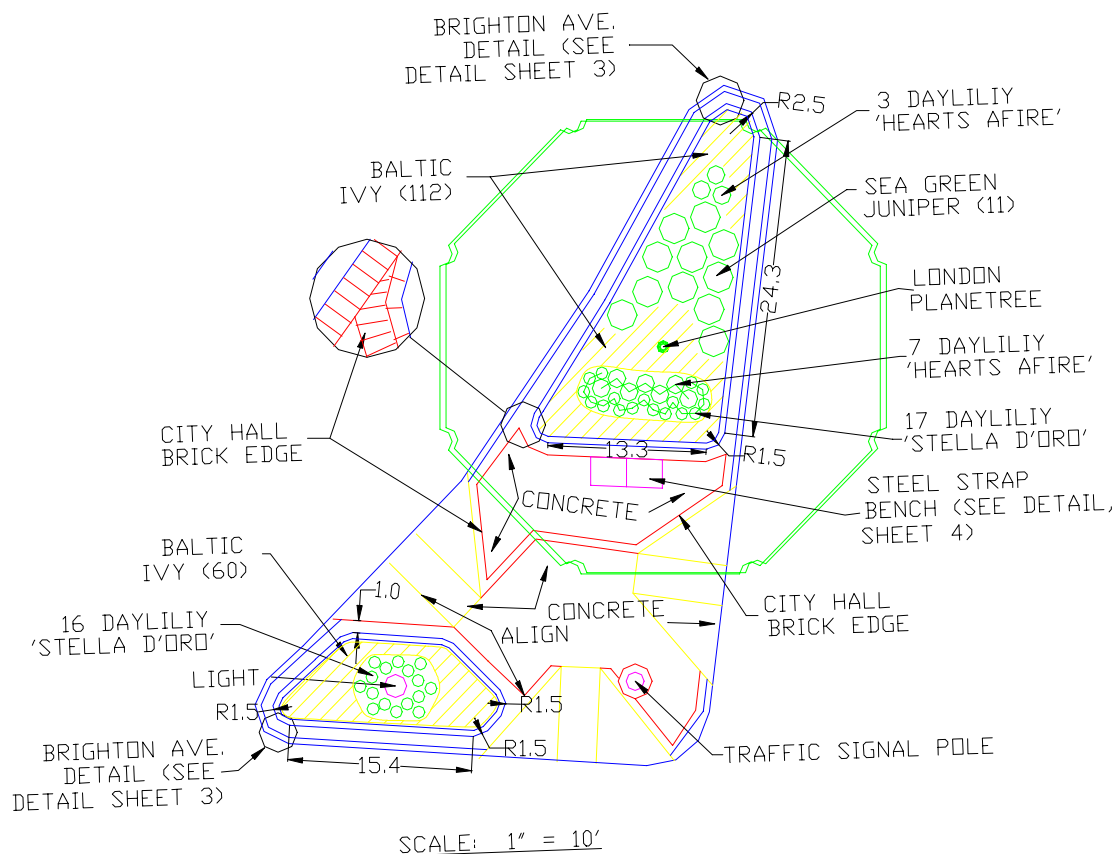
Warren Street Island at Cambridge Street.



Oak Square and landscaped island at junction of Washington and Tremont Streets.

## Brighton Streetscape (Continued)

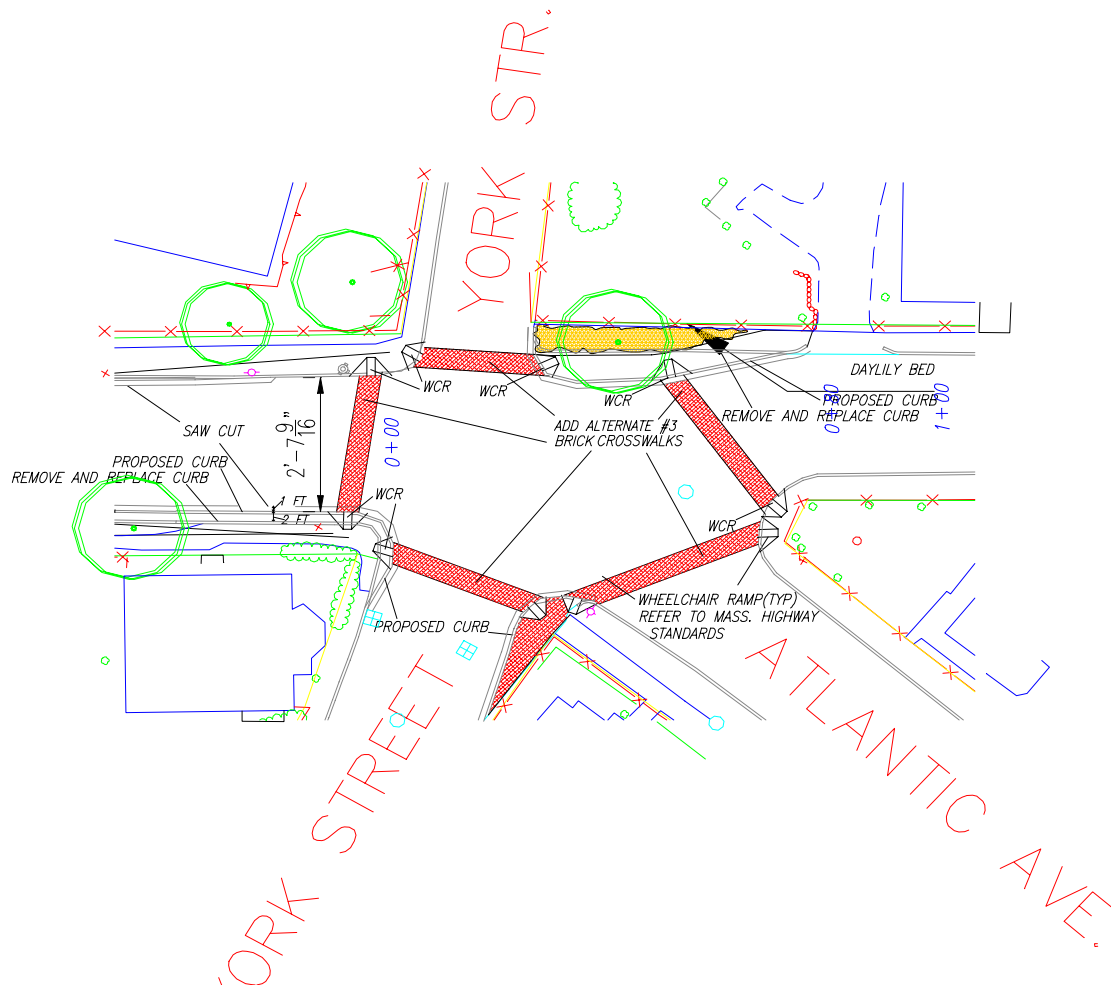
The Market Street Island is at the core of the Brighton business district. It is a Bus stop, a traffic diverter and a locus of specimen plantings. It was designed with the knowledge of a high level of interest in the community, therefore the use of more intense detailing (ie benches , pavement, raised planters, ets)



Landscaped island at the junction of Washington and Market St.

# STREETSCAPE DESIGN

## Five Corners - Nantucket, MA

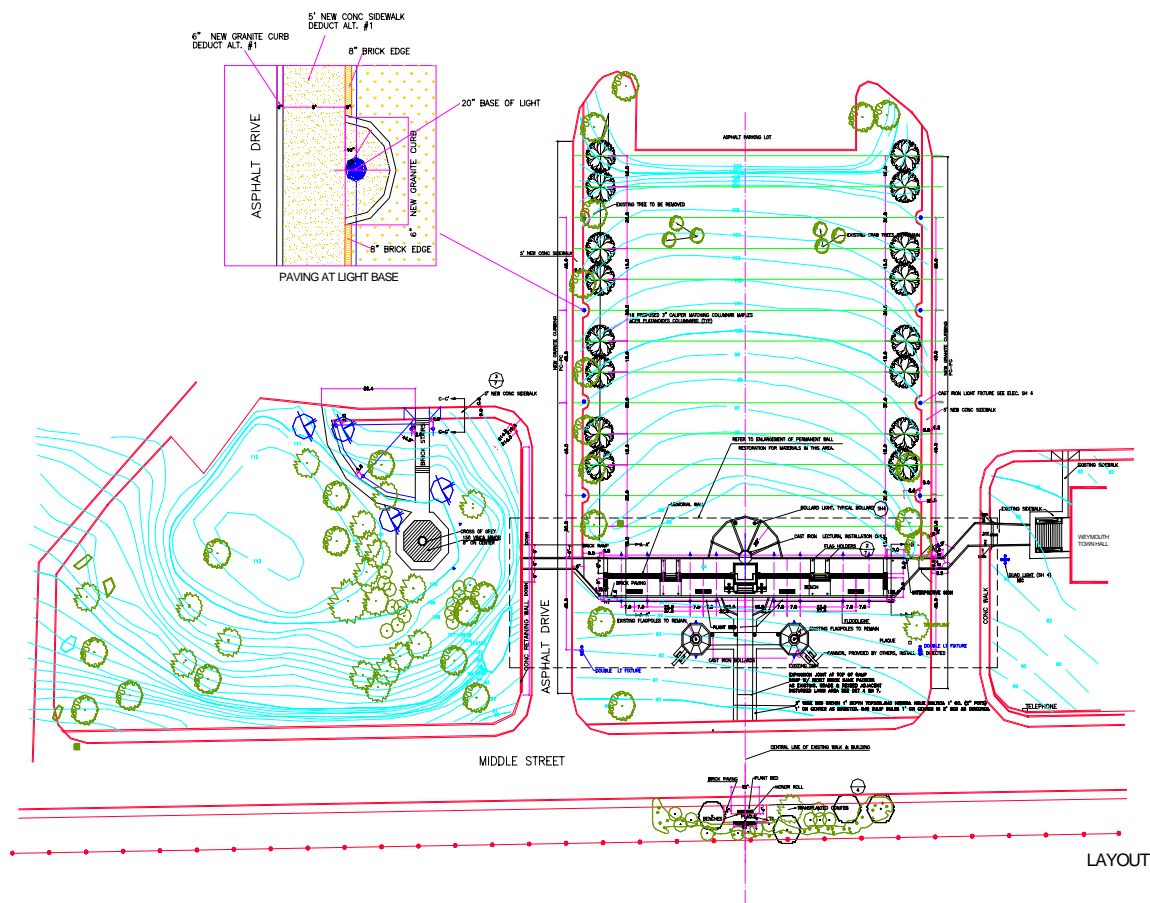


Five Corners is a historically significant intersection in a thoughtfully developed island community. This project involved the shifting of a street to accommodate the existing trees. This included moving the sidewalk and installing wheelchair ramps at all the intersections. The historic African Meeting House, used by the first black whalers, was renovated in conjunction with this project. We also designed stairs and a railing down to the existing parking lot. All this had to be done in keeping with the historic qualities of the area.



# PUBLIC SPACE DESIGN

## Weymouth Civic Center Weymouth, MA



This project involved the renovation and restoration of the Historic Veteran's Memorial Wall at the Weymouth Civic Center and the surrounding Green. This included locating trees around the perimeter of the Green, rearranging the paths and crosswalks, including handicapped access to the Cross of Grey, design of a public gathering space and stage area and construction documents for the restoration of the wall.

# Tyler Park



This project involved the renovation and restoration of an Olmstead Park. This was accomplished using Olmstead's own improvement recommendations that he dictated in 1904, 10 years after the park was built.



## PUBLIC SPACE DESIGN

### Quincy Colman



We were CAD technicians for Quincy Colman Community Garden that was developed by Dorchester Gardenlands Preserve and Development Corp with funding provided by Boston Public Facilities Dept. It was recognized by the Massachusetts Horticultural Society.

### Nortonwood Sitting Park

The Nortonwood Sitting Park entailed planting for attracting wildlife on a rehabilitated corner lot. Brick paving, steel fence and a circular seat wall were built. This project was also developed by Dorchester Gardenlands.





# PUBLIC SPACE DESIGN

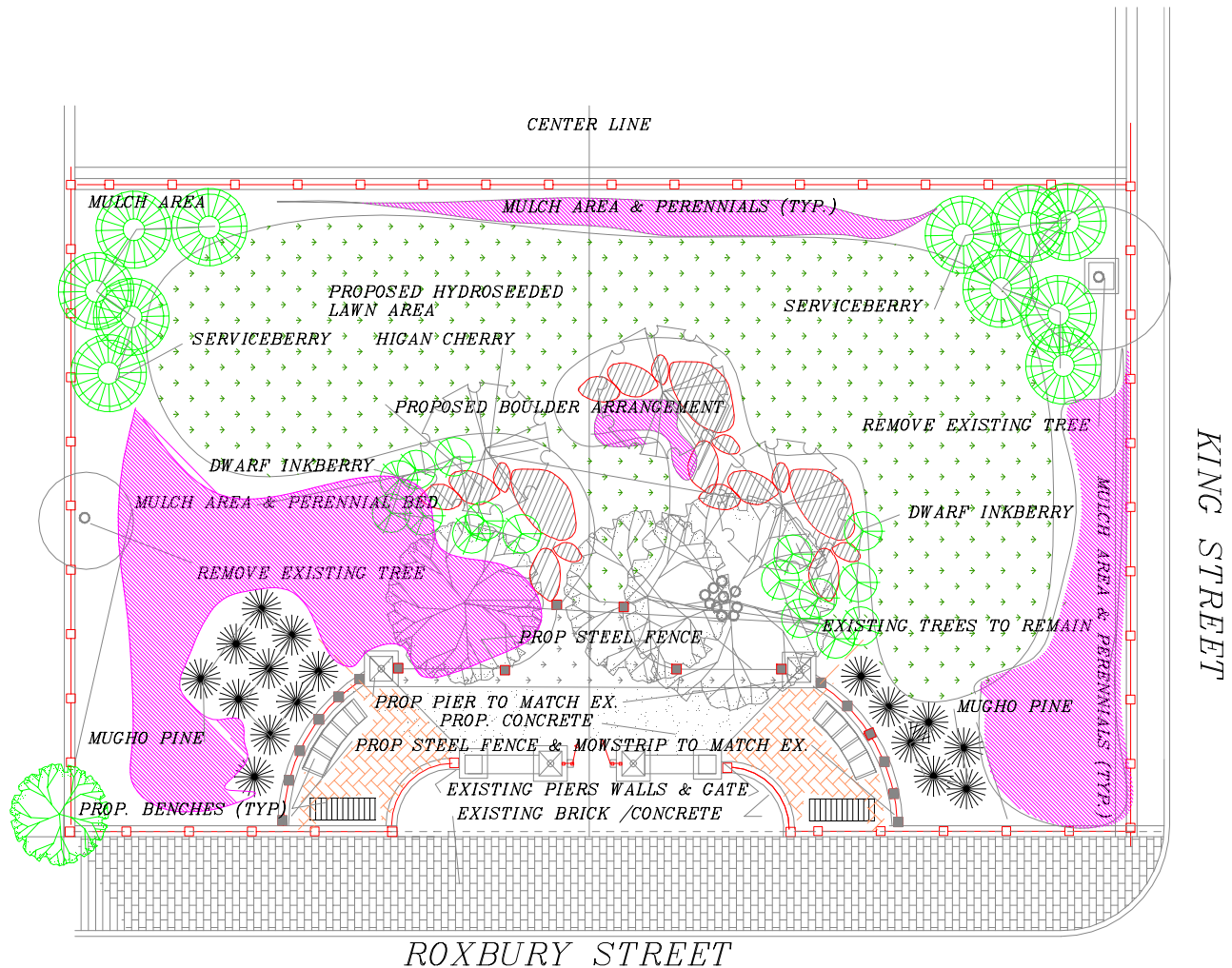
## Norton Stonehurst Flower Garden



Constructed by Dorchester Gardenlands, this seasonal flowering Community Garden provides open space for the community to enjoy. It is delineated by a brick walkway and a steel fence. Also the shed has a solar access panel incorporated into the roof

# PUBLIC SPACE DESIGN

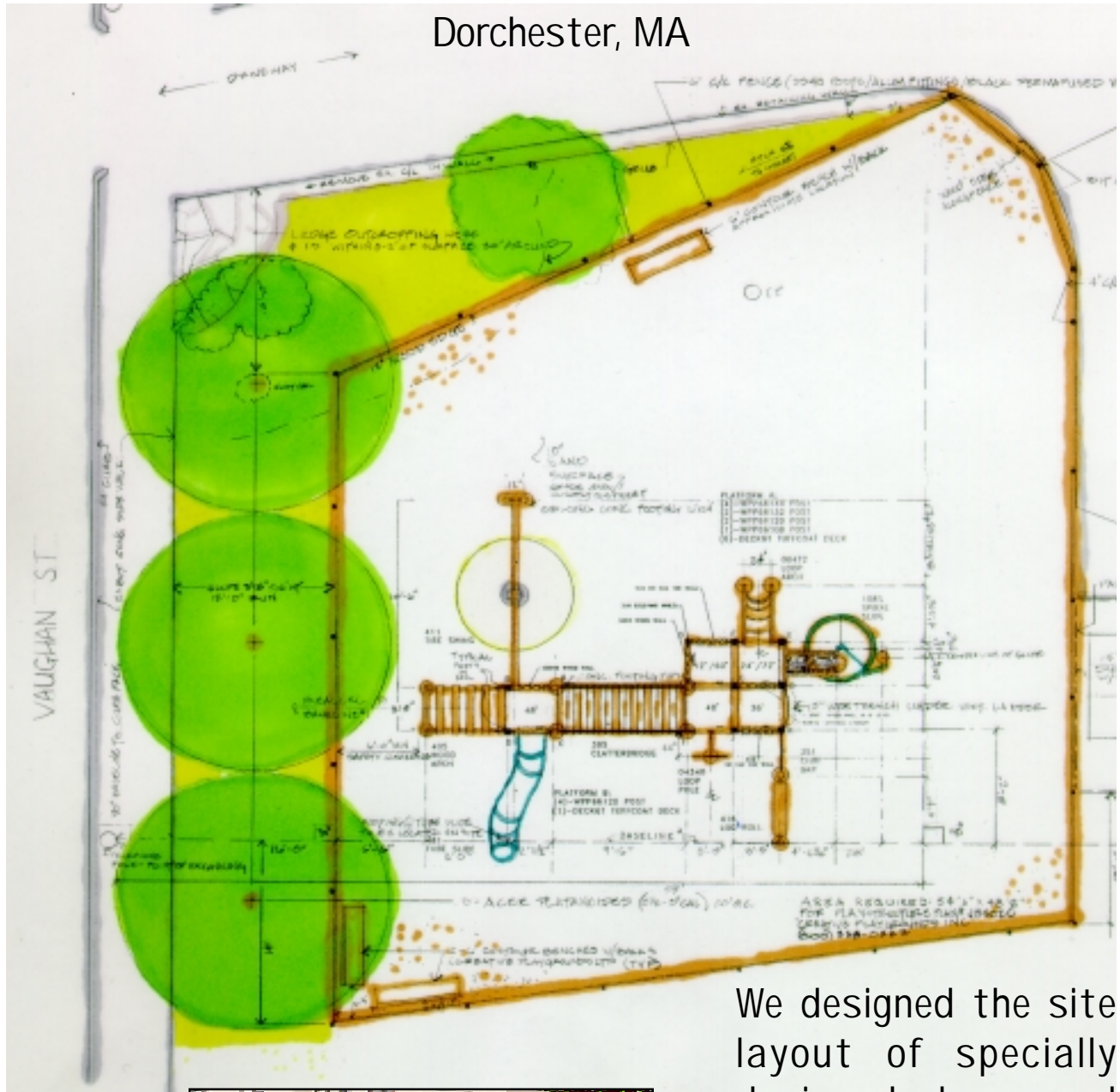
## George Robert White Fund Park Roxbury, MA



This small neighborhood park, funded by the George Robert White Fund, was designed to make the most out of a small space and help revitalize a struggling neighborhood. The Park is enclosed by a steel fence on 3 sides and sits atop a concrete wall on the fourth. We used plant material, brick paving, lawn and boulders to create an intimate space in this small corner lot.

# PUBLIC SPACE DESIGN

## Columbia Road Tot Lot Dorchester, MA



We designed the site layout of specially designed playground equipment for the Columbia Road Tot Lot in Dorchester, MA. This project also included a fenced enclosure and planting plan.



# MULTIFAMILY HOUSING

## Landmark Square



Landmark Square is an new apartment building in the Fenway in Boston. We designed the courtyards above the parking garage and the connection to the street. This included street trees, walls, fences and the landscaped courtyards with irrigation.



## RESIDENTIAL SUBDIVISION PLANNING

Entrance Design for a single family cluster community. Planned, Designed and Permitted by Native Landscapes.



Design within a cul-de-sac entails grading that preserves existing site features as a foreground for residential design.

Design for a Wetland Restoration in a residential subdivision.





## WETLAND AND BUFFER RESTORATION - Haverhill, MA (During Construction)



Residential subdivision off of Lake St. in Haverhill, MA.

Extensive Wetland Delineation and  
Wetland & Buffer Restoration  
throughout subdivision.





## WETLAND AND BUFFER RESTORATION - Haverhill, MA (After Construction)



Residential subdivision off of Lake St. in Haverhill, MA.

Extensive Wetland Delineation and  
Wetland & Buffer Restoration  
throughout subdivision.





## WETLAND RESTORATION - Plaistow, NH (During Construction)



Early stage of construction,  
showing the stream and  
mounds in the background.

The flowing stream with new  
plantings on its banks



Creation of the pond and the plantings around it.

## WETLAND RESTORATION - Plaistow, NH (After Construction)



Wetland Replication area is shown as stabilized. Newly planted Red Maple, Arrowwood and High-Bush Blueberry have been added and Speckled Alder have been transplanted from onsite.



We received the Boston Society of Landscape Architects Merit Award for this Project.



# QUALIFICATIONS

PERSONNEL RESUMES

CLIENT & REFERENCE LIST

REIMBURSEMENT POLICY

## **Robert E. Marini, LA, PE, Environmental Planner and Wetland Scientist**

### **Principal**

### **Native Landscapes**

#### **Introduction**

Mr. Marini formed **Native Landscapes** in 1989. He is a Registered Landscape Architect, Professional Engineer, Certified Wetland Scientist and Environmental Planner amongst several states. He possesses a range of experience on projects entailing urban design, geotechnical investigations, site design, wildlife habitat evaluation and monitoring wetlands resource analysis, land use and open space planning and design, and environmental impact review.

#### **Previous Experience**

- From 1990 to present as principal of **Native Landscapes**, Mr. Marini designed and advised on the construction of landscape architectural projects throughout Massachusetts, Rhode Island, and Florida. Representative projects included: preparing construction documents for the War Memorial known as Weymouth Civic Center the Brighton Streetscape Project and Caloosahatchee Regional Park in Lee County FL and Wetland Restoration in Plaistow, NH. In all of his projects he met with the community to arrive at a compatible solution with client and the community. As a wetland scientist he identifies wetland areas and prescribes approaches to restoration. Wildlife habitats and species population assessments have been regularly identified by him and his staff in the creation of indigenous preserve areas. The behavior of protected wildlife species is monitored according to state, county and Federal guidelines.
- He received a Merit Award from the BSLA in 2000 for wetland restoration in Plaistow NH. He was the first licensed Mangrove trimming specialist licensed in the City of Sanibel in 1995 and continues to oversee Mangrove protection as dictated within Florida and by the DEP, the Army Corps of Engineers (ACOE) and South Florida Water Management District (SFWMD). ERP applications pertaining to Mangrove regulations. Water quality testing results for nutrient levels, suspended solids and pH have been evaluated by him as TSS in runoff standards in Notices of Intent and in potable water standards.
- Scrub Jay Monitoring at North River Estates (1991). The Florida Scrub Jay is a State listed Species of Special Concern. Its flyway pattern was studied and lands within the project were preserved to accommodate their habitat requirements. Ultimately, the built project afforded the behavior patterns to continue, as observed in 2009.

- The Bridlewood Community in Cape Coral Florida was identified has habitat for Indigo Snake and Gopher Tortoise. We mapped the occurrences of these species and mapped zones of protection.
- At Caloosa Lodge We mapped and Identified Bald Eagle (*Haliaeetus leucocephalus*) nesting sites and wrote specifications for protection of the habitat zones, which were accepted by Lee County environmental Sciences.
- J & J Nursery

Working toward compliance with South Florida Water Management District, we identified Bald Eagle (*Haliaeetus leucocephalus*) and Florida Panther (*Puma concolor*) habitat. Using GIS mapping we corroborated our subject site with the appropriate FLUCCS designation and accounted for the historical changes that occurred,

- Digestive Health  
Prescribing maintenance and protection of indigenous preserve areas is an ongoing pursuit of ours whether we are contracted to do so or not. Signage, removal of exotic species and selective pruning to create edge effect in our aim to create connectivity to more dominant public preserve areas

- Barnstable Conservation Commission

This Cape Cod Community has superceding regulations from which **Native Landscapes** prepared several applications which fulfilled the Commission's guidelines for wetland verification and protection. We surveyed for the Protected Fresh Water Mussel species indigenous to inland lakes on Cape Cod.

- At **AECOM**, formerly, Whitman & Howard Inc., he participated as Project Manager for a number of subdivisions and site plans reviews for the Town's of Medfield, Plymouth and Needham, Massachusetts. Park renovation for several Boston Park and Recreation sites was his dominant role, where he met with the community and coordinated all final design drawings, from '88 – '90. He also developed several fresh and salt water marshland replication plans, including specifications for permit filings to the Massachusetts Department of Protection. In connection with these projects, he prepared documents and supervised construction

- Mr. Marini served as the **BSC Group's** Project Manager on several projects, preparing site plans for mixed-use and multifamily / office developments, from '86-'88. As a Project Landscape Architect at BSC, he assisted the Town of Scituate, MA Planning Board in reviewing the construction of the "Scituate Country Club Condominiums". Also he developed detailed site plans for the Heritage State Park in Fall River, MA



- Mr. Marini was **Norwood Engineering's** Project Site Planner and Graphic Coordinator for the preparation of the Environmental Impact Report for Stone Ridge Office Park in Norwood, MA, from '84-'86. In his capacity as a Wetlands Botanist, he identified wetland resource areas according to the criteria of the Massachusetts Wetland protection Act. As a site planner at Norwood Engineering he developed cluster housing alternatives for Bishop's Forest in Waltham and several commercial /industrial projects. He was engaged by developers to fulfill the special permit process within various municipalities.
- Prior to and during Graduate school from '78 to '80, he began his engineering apprenticeship as a construction inspector for the **Maguire Group**. His daily tasks primarily consisted of monitoring contractor's production and performance in utility, streetscape and sewage treatment plant installation. Executed geotechnical specifications in pile driven support for utilities. Final contract drawings were used to gauge a contractor's progress. In the Providence office of this firm, he served as a survey crew component to develop existing conditions of the Streets of Woonsocket Rhode Island. The plotting and drafting of plan and profile sheets were his typical objectives.

## **Professional Background**

Bachelor of Science in Civil Engineering, University of North Dakota, 2009

Engineer Intern, # 1100014268 Florida, 2009

Master of Landscape Architecture, University of Pennsylvania, 1982

Bachelor of Science in Botany, University of Massachusetts, 1976

Registered Landscape Architect in Florida #1044, Massachusetts #829

Professional Civil Engineer, Massachusetts, #48,762

Registered Wetland Scientist in New Hampshire #215

ASLA, American Society of Landscape Architects, 2008

ASCE, American Society of Civil Engineers UND Chapter, 2009

Continuing Education Instructor for the Boston Architectural Center '86-'90

Familiar with the Spanish Language

## **Edd C. Baker**

### **Senior Environmental Planner**

#### **Introduction**

Mr. Baker is the Senior Biologist & Environmental Planner of Native Landscapes. He currently manages the day to day operations at our office in Ft. Meyers, FL. His background in wildlife habitat assessment and field ecology makes his contribution essential to any of our projects in any location. Mr. Baker has been a resident of Southwest Florida since 1971 and has been an Adjunct Professor of Biology at Edison Community College since 1993. He has prior experience as Assistant Principal for Curriculum and Teacher of Marine Biology within the School District of Lee County since 1971. As Office Manager and lead ecologist in Ft. Myers, FL., Mr. Baker meets with Architects, Engineers, Real Estate Developers as well as state county and local officials to evaluate ecological status and document the effect of environmental impacts. We believe a close working relationship with the county, DER, DNR, South Florida Water Management District the U. S. Army Corps of Engineers, etc. is essential to giving our clients consistent opinions, which they can base future decisions on.

#### **Experience**

- As an Adjunct Professor of Biology at Edison Community College since 1993. Mr. Baker has applied research he conducted in graduate school to lead academic procedures in field ecology which are fundamental to the Florida Land Use Cover Classification System from.
- As Assistant Principal for curriculum at the School District of Lee County, from 1971 - 1989, Mr. Baker served as the Dean of students and Coordinator of the Community Education program. As Dean of Students and teacher of Marine Biology he instilled in his students an appreciation of the objectives of the environmental regulatory community.
- At Southeastern Christian College from 1969 - 1971 in Winchester, Kentucky, Mr. Baker taught Zoology, Botany, Anatomy and Physiology and Scientific Etymology
- At Eastern Kentucky University in Richmond Kentucky, he served as a Graduate Teaching Assistant in the Department of Biology.

#### **Professional Background**

Master of Science in Ecology, Eastern Kentucky University, Richmond, KY, 1970

Bachelor of Science in Chemistry and Biology, Eastern Kentucky University, Richmond, KY, 1964

Florida Certification in Biology, Chemistry and Administration/Supervision.

## **MICHAEL LEVERE PRINCE, PE**

### **Senior Engineer**

#### **Introduction**

Michael Prince is a licensed Civil Engineer in Both Florida and Mississippi. He has over 18 years of experience since graduating from the University of Florida with a BS in Mechanical Engineering. He has over ten years of experience in Civil Engineering. He provides technical expertise in Civil Engineering to **Native Landscapes**.

#### **Previous Experience**

January '10 – Present **Native Landscapes**

Oct '99 to Nov '09 **Neese and Associates**, Ft. Myers, Florida

2006-2009 Vice-President of Engineering - Management, preparation, and coordination of civil engineering projects.

1999-2006 Project Manager- Preparation and coordination of civil engineering projects including utility design, storm water system design, road design, infrastructure design, traffic impact statements, and project drawings based on AutoCAD.

Jun '95 to Sept '99 **American Power Conversion**, Ft. Myers, Florida

Associate Manufacturing Engineer- Assisted in the evaluation and recommendation of improvements to the manufacturing process to include tooling and assembly methods, coordination of pilot production to full production, assembly guides, procedures, and illustrations, maintained records for coordination of manufacturing operations, and set up production equipment used in cellular manufacturing.

Auto Insertion Technician- Set-up, taught, troubleshooting, and repair of Universal Auto-Insertion machines and conveyors.

Auto Insertion Operator- Responsible for the setup, operation, and monitoring of Universal Auto Insertion systems.

Jan '93 to Nov '94 Italiana Servizi & Costruzioni, Catania, Italy  
Mechanical Engineer- Construction, testing, & design modifications of shipboard automatic sampling systems used in independent surveys of petroleum cargos entering Italy from foreign countries. AutoCAD– developed computer based system of product designs.

Jul '89 to Oct '89 Italservice Gruppo, D.G.S. Systems, Catania, Italy



Programmer – Computer program modification in BASIC. Training in hardware repair and upgrading of IBM compatible computers.

- May '88 to Aug '88 Barnes Electric Co. Gainesville, Florida  
Electrician's Helper – Assisted in wiring renovations of hospital, wired light fixtures, read wiring schematics, and organized and maintained office accounts.
- Aug '83 to Jan '87 Veteran's Administration Hospital, Gainesville, Florida  
Work study for Vocational Rehabilitation Clinic.  
Interviewed and administered tests to patients.
- Oct '76 to Oct '82 United States Navy, Worldwide  
Machinist Mate Second Class. Liquid Oxygen Plant Operator. Liquid Nitrogen Plant Operator. Aircraft Refueler. Transportation and storage of cryogenic products. Performed test for all Naval Cryogenic Plants in the Mediterranean under the Aviation Breathing Oxygen Surveillance program. Leading Petty Officer of Steam Heat Shop aboard USS Forrestal. Master at Arms Force. Honorable Discharge.

## **Professional Background**

Professional Engineer, Civil Engineering; State of Florida, since 2006

Professional Engineer, Civil Engineering; State of Mississippi, since 2008

Machinist Mate Class "A" School, March 1977, United States Navy

Bachelor of Science, Mechanical Engineering, 1991, University of Florida

Auto Insertion Technician Training, 1997, Universal Training Center, NY

AutoCAD for the Prof. – Levels 1 & 2, June 1999, Erwin Tech. Center, Tampa

Windows, Excel, Word, WordPerfect, AutoCAD

TripGen, HydroCad, Hydrograph

Speaks Fluent Italian

**Roy T. Van**  
**Environmental and Urban Designer**  
**Introduction**

Roy Van is a matriculating BLA student at Boston Architectural College. Prior to attending and during his nearly complete length of tenure, he has amassed a broad spectrum of experience at various levels that encompass a variety of sub disciplines in environmental science and landscape architecture. As a part time contributor since 2007 Roy is able to coordinate the functions of a small urban landscape architectural office. His architectural and urban design experience has amplified our presence in the Boston area. Given his field experience and the latest communication technologies he can recognize wetland resource areas according to State and Federal Army Corps guidelines.

**Previous Experience**

He researched codes, prepared renderings and attended conservation public meetings for Parker Street Office building in Waltham, MA. He identified and mapped protected plant species at Rag Rock Hill for the City of Woburn, MA. He was initially trained at our Florida office, where he utilized County and City codes to plan Town and River Office Park and Riveron Office Building. He also prepared final residential design plans for the Belloli Residence.

- At **Pressley Associates, Inc.** Cambridge, MA he participated as a landscape designer from November 2007-January 2010. There he assembled survey drawings, site photos, site analysis and Conducted historical research as necessary for Fidelity Investments Corporate Campuses Rhode Island and Kentucky Oak Grove Village in Malden, MA. Eastport Park in Boston, MA, 3 Maples Trust in Cambridge, MA. Camp Beech Cliff in Mt Desert Island, ME, Boston Medical Center in Boston, MA, Weston Corporate Center in Weston, MA, South Bay Harbor Trail in Boston, MA, Maine State Capitol Park in Augusta, ME, Kushlefsky Residence in Brookline, MA. In these projects he also produced CAD Drawings for all phases of projects, schematic design (SD) through Construction Documents (CD) including planting plans and construction details. He prepared rendered landscape plans for presentation materials for client meetings. Finally he coordinated shop drawing approvals in conjunction with scheduling demands in the construction phases of his projects.
- In his earlier professional years at **Steffian Bradley and Associates**, 1999 -2001, he prepared CAD drafted documents from and assisted in model construction for numerous urban projects.

**Professional Background**

**Boston Architectural Center**, Boston, MA Candidate for Bachelor of Landscape Architecture  
American Society of Landscape Architecture Students BAC Chapter

AutoCAD, Adobe Creative Suite, SketchUp, ArcGIS, Microsoft Office, model building

Wetland resource and Protected plant species evaluation

**Michael J. Jessich**

## **Wildlife Biologist and Ecologist**

### **Introduction**

Mr. Jessich has developed an understanding of ecosystem ecology in areas such as coral reef management and the decline resulting from increasing atmospheric CO<sub>2</sub>, causing temperature increases and ocean acidification. He focuses on a combination of wildlife behavior and ecosystem ecology. He has also worked with animal husbandry staff, assisting in research and production of experimental seahorse fry exhibits. He has applied his field capabilities at Native **Landscapes**, identifying vegetative plots and assisting in landscape restoration projects.

### **Previous Experience**

In an academic environment he developed Plant Function and Techniques: Observation and Data Recording, Weights and Measures, Antiseptic Techniques, Light Microscope Techniques, Primary Literature Research and Summary Writing, Experimental Design and Implementation. He acquired research experience utilizing primary literature within the field of ecosystem ecology. Additionally, He has been a certified advanced scuba diver for ten years.

- **Underwater Adventures Aquarium**, Bloomington Minnesota Animal Husbandry

Internship May 2008-July 2008

He provided animal care through managed and assigned feeding schedules and exhibit quality maintenance. He improved animal observation techniques, through accurately recording target feedings and general health monitoring. Maintained display and experimental qualities of aquarium exhibits, kitchen, and public domains, and provided assistance to the redesigned and constructed Pot-Bellied Seahorse fry aquarium exhibits.

- **Florida DEP** - Internship 2010

### **Professional Background**

- BS in Ecology, Evolution and Behavior, University of Minnesota  
Animal Behavior Society, Member March 2008-present  
NAUI, Advanced Scuba Diver August 1998-present  
Florida Storm Water Erosion & Sediment Control Inspector April 2009-present  
Professional Mangrove Trimmer & Vegetation Contractor, City of Sanibel, FL (*license shall be activated on a contract basis*)



<b><u>Relevant Projects and Client References</u></b>	
<ul style="list-style-type: none"> <li>Landscape Architect for design of <b>Brighton Streetscape</b> renovation Construction Cost \$8,000,000. (SCH /DD/CD/AC) Design ongoing; Fee = \$ 75,000)</li> </ul>	<p><b>Peter Scarpignato, Executive Assistant</b>  <b>Boston Public Works Department</b>  Boston City Hall Plaza  Boston, MA 02201  (617) 635-4968</p>
<ul style="list-style-type: none"> <li>Landscape Architect for renovation of <b>Tyler Park</b> in Lowell, an historic Olmsted, and Eliot Park site. (SCH / ST - Completed 9/97; Fee \$ 4,500.)</li> </ul>	<p><b>Diane Tradd, Design Planner</b>  <b>City of Lowell</b>  <b>Division of Planning and Development</b>  JFK Civic Center  Lowell, MA 01852  (978) 970-4252</p>
<ul style="list-style-type: none"> <li>Landscape Architect for the preparation of a Master Plan to site athletic fields on the <b>North Carver Landfill</b>. These tasks included a wetland evaluation. (SCH / ST - Completed 12/97 Fee = \$ 4,500.)</li> </ul>	<p><b>Richard J. LaFond, Town Administrator</b>  Town Hall, Main Street  Carver, MA 02330  (508) 866-3400</p>
<ul style="list-style-type: none"> <li>Evaluated sites throughout the city of Boston for street trees. Created matrices and marked sidewalks. Applied knowledge of ADA/AAB regulations. Construction cost=\$300,000 (CD/AC - Completed 6/97 Fee=\$6,000)</li> </ul>	<p><b>Pollyanne Melton – Landscape Architect</b>  <b>Boston Parks &amp; Recreation Department</b>  1010 Massachusetts Ave.  Boston, MA 02188  (617) 635-4505</p>
<ul style="list-style-type: none"> <li><b>Five Corners Streetscape.</b> Prepared Landscape Architectural documents for restoration of historical neighborhood. This entailed curb and pavement changes adjacent to existing canopy trees and utilities. (SCH/DD/CD Ongoing – Fee=\$7,000) Estimated construction cost \$150,000</li> </ul>	<p><b>Andrew Vorce –Community Dev. Planner</b>  <b>Town of Nantucket</b>  1 East Chestnut Street  Nantucket, MA 02554  (508) 228-7237</p>

Relevant Projects and Client References	(continued)
<ul style="list-style-type: none"> <li>• <b>Quincy / Coleman Community Garden</b></li> <li>• <b>Torrey Street Sitting Park</b> CAD layout of community garden, paving and wall elements for special needs users. 6/98 CD; Fee=\$1,000. Estimated Construction cost is \$40,000.</li> </ul>	<p><b>John Berg</b> <b>Boston Public Facilities Department</b> 15 Beacon Street Boston, MA 02108 (617)635-0203</p> <p><b>Laura Petrucci</b> <b>Dorchester Gardenlands</b> 21 Winter Street Boston, MA 02122 (617)825-9126</p>
<ul style="list-style-type: none"> <li>• <b>Sharon Lake Massapoag Erosion Control Project</b> Native erosion control planting scheme, &amp; stairway design. Wetland delineation was performed along the lake. And a full submission was approved by the Conservation Commission; 1/97; SCH - AC: Fee=\$8,000; Construction cost is \$250,000.</li> </ul>	<p><b>Sharon DPW</b> <b>Robert Veal</b> Town Engineer (781)784-1529</p>
<ul style="list-style-type: none"> <li>• <b>Weymouth Civic Center</b> Evaluated existing trees and determined replacements which would form a colonnade at the edge of a Town Green design which is the gathering place for a Historic War Memorial, We prepared full Contract drawings. ;9/99; DD CD – AC (ongoing); Fee=\$10,000 Construction cost is \$290,000.</li> </ul>	<p><b>Weymouth Office of Community Development</b> <b>Roderick Fuqua, Principal Planner</b> Town Hall 75 Middle Street E. Weymouth, MA (781) 335-3283</p>
<ul style="list-style-type: none"> <li>• <b>City of Quincy- NW Quincy Drainage Project</b> Delineated coastal wetlands and prepared replication plans and specifications as a sub-consultant to <b>Weston &amp; Sampson</b> in response to guidelines established by CZM and DEP and the City of Quincy. (ST 3/93; Fee=\$3,000.) Construction cost to be determined.</li> </ul>	<p><b>Heather Sargent, Enforcement Officer</b> <b>City of Quincy</b> 1305 Hancock Street Quincy, MA 02169 (617) 376-1000</p>

**KEY:** ST - Studies; SCH - schematic; DD - design development; CD - construction documents;  
AC - construction monitoring.

## REIMBURSEMENT POLICY

### *Fee Schedule*

- |  |           |
|--|-----------|
| • Principal LA/Environmental Scientist | \$160./hr |
| • Associate LA                         | \$120./hr |
| • Project LA                           | \$75./hr  |
| • CAD /Field Tech                      | \$50./hr  |
| • Office WP                            | 45./hr    |

### *General*

- All fees are due at the time of provision of services, unless other arrangements are made. All fees not paid as required will incur an additional 1.5% interest on the unpaid balance, then, and monthly thereafter until full payment is received. This policy shall prevail unless another agreement is made.
- Fees for conceptual design and schematic design are generally billed on an hourly basis and fees for contract documents are agreed upon on a fixed fee basis, unless other arrangements are made.
- We desire to quote compensation for our services on a fixed fee basis wherever possible. When additional services are requested we shall bill at the hourly rate schedule, listed above.
- Fees for attendance at meetings begin at \$200.00. Hourly rates prevail for any time spent associated with meetings spent beyond 2 hours.

### *Expenses*

- Miscellaneous expenses will be billed as necessary to perform our services.