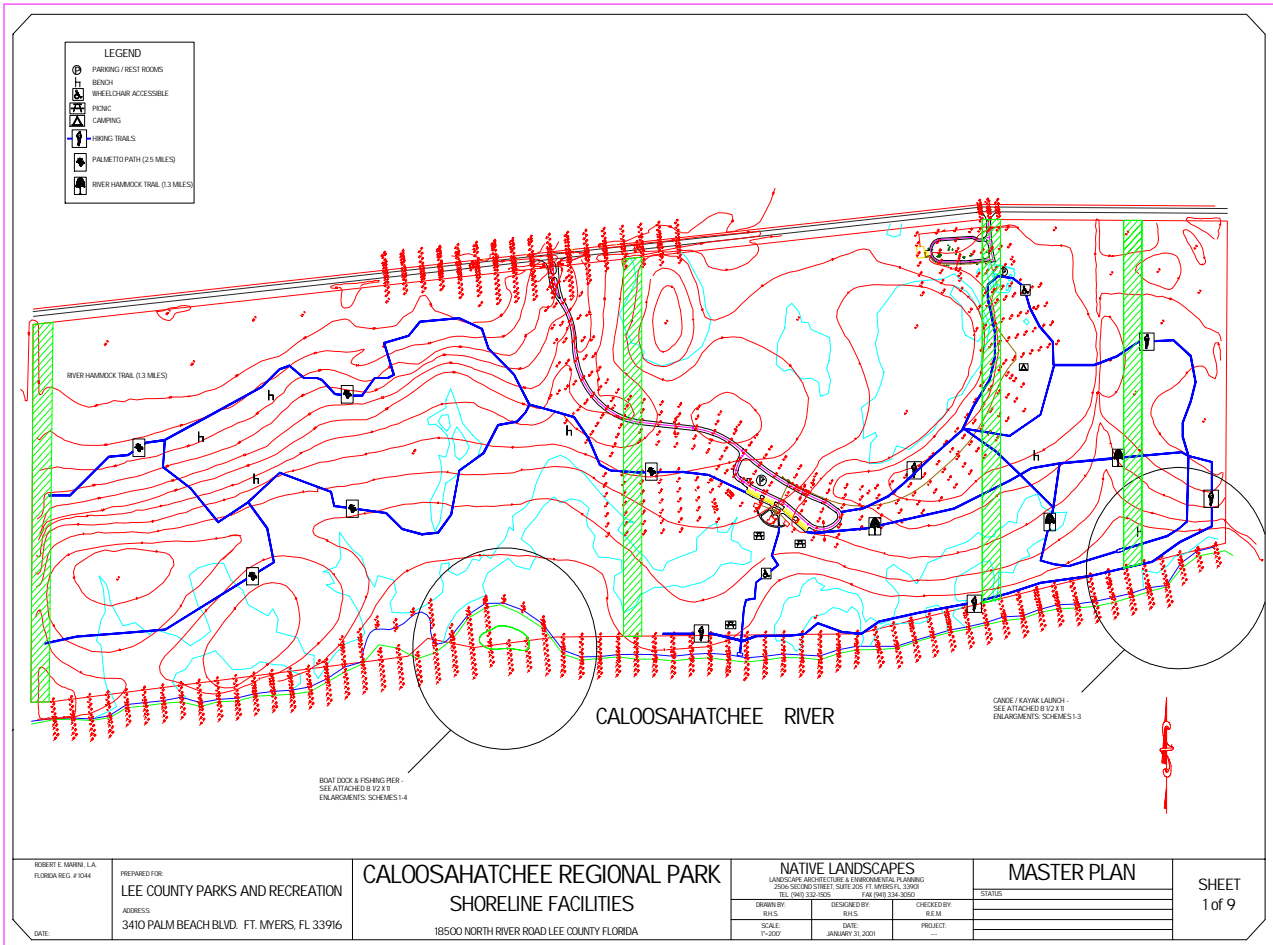
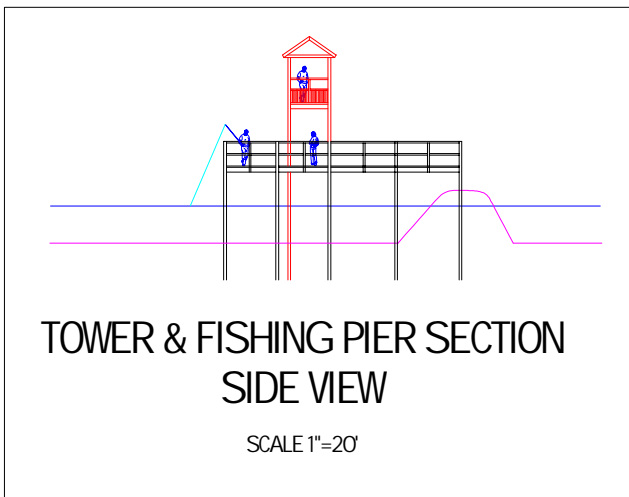


PARK DESIGN

Caloosahatchee Regional Park



Overall Plans showing the existing conditions of the park and proposed areas of improvement.



Fishing Pier and Overlook Tower.

Caloosahatchee Regional Park - Shoreline Facilities.

We are currently working on plans for a fishing pier, boat landing, canoe launch and enhanced trail system at Caloosahatchee Regional Park for Lee County Parks & Recreation.

STREETSCAPE DESIGN



Landscaped island at the junction of I-75 and State Road 80.



Landscaped pocket at the junction of I-75 and State Road

State Road 80, (Palm Beach Blvd.) between the Ft. Myers city limits and Orange River Blvd., was designed in accordance with Florida D.O.T. standards. Palm trees line the side of the road to form a gateway at I-75. We also designed two landscaped and irrigated islands, and landscaped pockets at the junction of I-75 and State Road 80.

LANDSCAPE PLAN FOR MULTIFAMILY PLANNED UNIT DEVELOPMENT



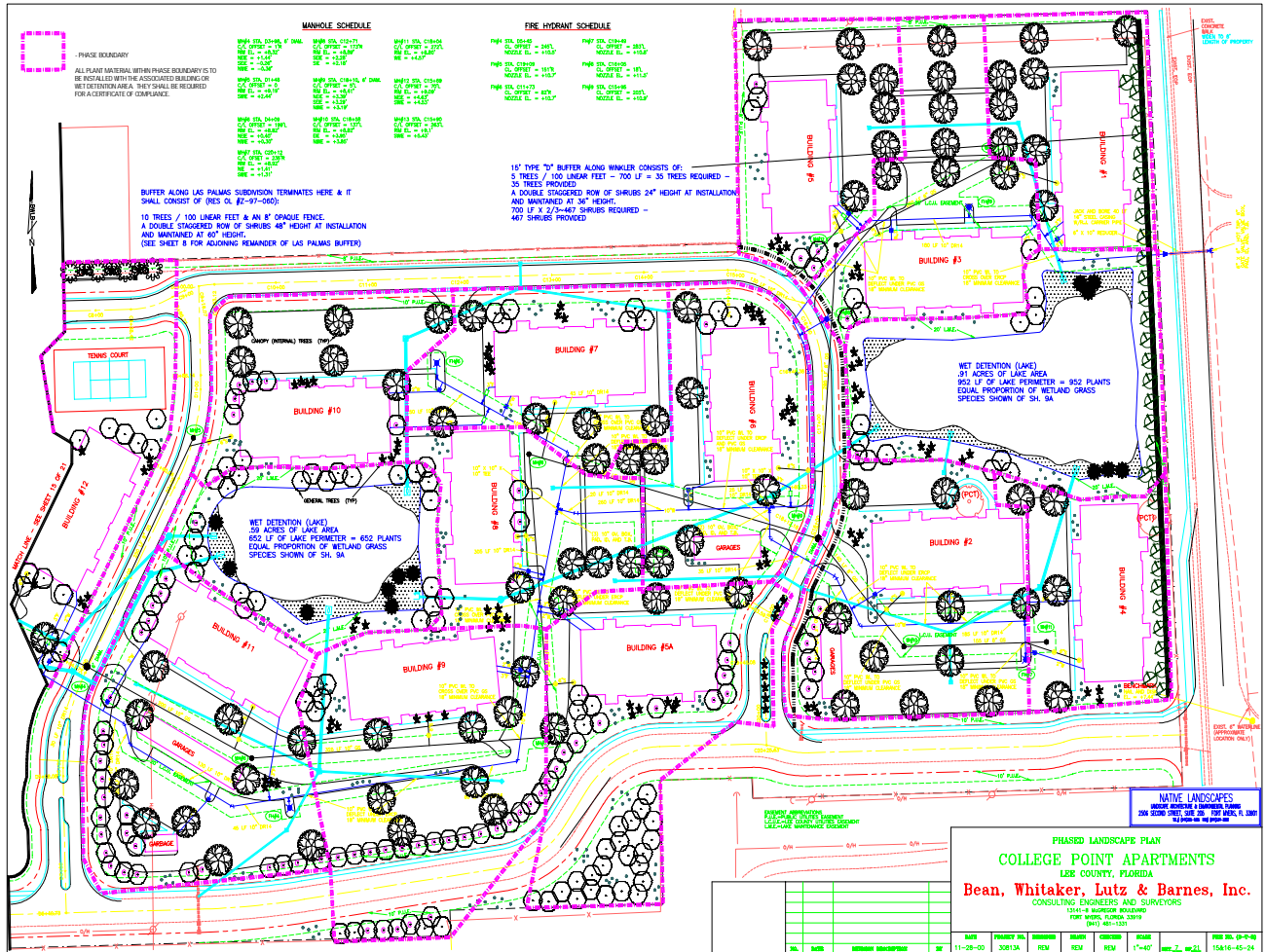
Entrances to a multifamily community promote an identity to the property.

Unit entrances plantings will mature to keep the architecture in scale.

Waterway Pointe & Villas at Waterside are two abutting properties planted in '98 & '99 in Marco Island Florida.



COLLEGE POINTE APARTMENTS



One third of Phased Landscape Plan for College Pointe Apartments

College Pointe Apartments is a large scale apartment complex off College Ave in Lee County that we worked on in association with Bean, Whitaker, Lutz & Barnes, now BWL & Kareh. We provided all Landscape Architectural services for the project including a landscape plan to meet Lee County Landscape Code. We planned all the stormwater detention lakes and are conducting inspections for Certificates of Compliance. This project involved over a year of collaboration with the engineers at BWLK and is currently under construction.

RESIDENTIAL DESIGN



Residential Landscape design using existing site features compliment this Collier County Residence.



Landscaped entrance to a multi-family dwelling.

MANGROVE TRIMMING INSPECTION



Mangrove trimming inspection is performed in keeping with the natural form of the Native species. The Sanibel and Signal Inn properties on Sanibel were trimmed according to the city's ordinance.